

## Sidewalk replacement 2001-2013

2001            17,780 sq. ft.            \$ 72,186.80

North Illinois St. west side from Short St. to Hanawalt St. 710 ft. x 5 ft. / 3,550 sq. ft. \$ 14,413.00

North Illinois St. west side from 606 N. Illinois St. to St. Marys Ave. 130 ft. x 5 ft. / 650 sq. ft. \$2,639.00

North Illinois St. west side from St. Marys Ave. to Pierce St. 370ft. x 5 ft. / 1,850 sq. ft. \$7,511.00

West Broadway St. from 407 W. Broadway to Second St. 266 ft. x 5 ft. / 1,330 sq. ft. \$ 5399.80

West Broadway St. south side from 509 W. Broadway to Third St. 246 ft. x 5 ft. / 1,230 sq. ft. \$ 4993.80

West Broadway St. south side from Third St. to Fourth St. 376 ft. x 5 ft. / 1,880 sq. ft. \$ 7,632.80

South Main St. west side from Market St. to Ohio St. 268 ft. x 5 ft. / 1,340 sq. ft. \$ 5,440.40

South Main St. west side from 506 S. Main to 522 S. Main 132 ft. x 5 ft. / 660 sq. ft. \$ 2,679.60

South Main St. west side from 526 S. Main to 536 S. Main 146 ft. x 5 ft. / 730 sq. ft. \$ 2,963.80

South Main St. west side from 554 S. Main to South St. 278 ft. x 5 ft. / 1,390 sq. ft. \$ 5643.40

East Market St. south side from alley to S. Main St. 178 ft. x 5 ft. / 890 sq. ft. \$ 3,613.40

East Market St. north side from alley to S Main St. 178 ft. x 5 ft. / 890 sq. ft. \$ 3,613.40

South Bluff St. west side from Market St. to E. Ohio St. 278 ft. x 5 ft. / 1,390 sq. ft. \$ 5,643.40

2002                    13,990 sq. ft.                    \$ 55,416.40

West South St. north side from Bluff St. to alley behind Twin Lakes School Administration building

160 ft. x 5 ft. / 800 sq. ft.    \$ 3,184.00

South Bluff St. west side from South St. to Cleveland St. 484 ft. x 5ft. / 2,420 sq. ft.    \$ 9,583.20

West Jefferson St. north side from First St. to Third St. in various areas

484 ft. x 5 ft. / 2,420 sq. ft.    \$ 9,583.20

West Washington St. south side from Third St. to Second St. in various areas

260 ft. x 5 ft. / 1300 sq. ft.    \$ 5,148.00

West Marion St. south side from Dewey St. to 605 W. Marion St.in various areas

460 ft. x 5 ft. / 2,300 sq. ft.    \$ 9,108.00

Maple St. west side from Market St. to South St. in various areas

950 ft. x 5 ft. / 4,750 sq. ft.    \$ 18,810 .00

**2004            19,227 sq. ft.            \$ 77,673.36**

West Washington St. south side from Dewey St. to Second St. in various areas

426 ft. x 5 ft. / 2,130 sq. ft. \$ 8,307.00

West Marion St. north side from Dewey St. to Third St. in various areas

552 ft. x 5 ft. / 2,760 sq. ft.            \$ 10,764.00

South Main St. east side from 501 S. Main to 713 S. Main in various areas

412 ft. x 5 ft. / 2,060 sq. ft. \$8,034.00

North Main St. west side from 422 N. Main to 614 N. Main in various areas

474 ft. x 5 ft. / 2,370 sq. ft. \$ 9,243.00

West Harrison St. south side from First St. school property in various areas

282 ft. x 5 ft. / 1,410 sq. ft. \$ 5,499.00

West Jefferson St. south side from Third St. to First St. in various areas

300 ft. x 5 ft. / 1,500 sq. ft. \$ 5,850.00

Cleveland St. south side from Bluff St. to 111 ½ Cleveland St. 82 ft. x 5 ft. / 410 sq. ft. \$ 1,599.00

South Bluff St. west side from Cleveland St. to Tioga Rd. 720 ft. x 5 ft. / 3,600 sq. ft. \$ 14,040.00

West Broadway St. north side from Main St. to Illinois St. 345 ft. x 8 ft. 8 in. / 2,987 sq. ft. \$14,337.36

**2005            11,890 sq. ft.            \$ 57,547.60**

Maple St. west side from 538 Maple St. to South St. 388 ft. x 5 ft. / 1,940 sq. ft. \$7,449.60

South Bluff St. east side from Jefferson St. to Ohio St. 660 ft. x 5 ft. / 3,300 sq. ft. \$ 12,672.00

East Ohio St. north side from Bluff St. to alley between Bluff St. and Maple St.

140 ft. x 5 ft. / 700 sq. ft. 2,688.00

East South St. south side from Main St. to Maple St. 570 ft. x 5 ft. / 2850 sq. ft. \$ 10,944.00

South First St. east side from Jefferson St. to Ohio St. 310 ft. x 5 ft. / 1550 sq. ft. \$ 5,952.00

South First St. west side from Jefferson St. to Ohio St. 310 ft. x 5 ft. / 1550 sq. ft. \$ 5,952.00

2006      13,750 sq. ft.                      \$ 52,799.20

Maple St. east side from 535 Maple St. to 609 Maple St. 624 ft. x 5 ft. / 3,120 sq. ft. \$11,980.80

South Illinois St. west side from 520 S. Illinois St. to 558 S. Illinois St. 420 ft. x 5 ft. / 2,100 sq. ft.

420 ft. x 5 ft. / 2,100 sq. ft. \$ 8,064.00

South Bluff St. east side Ohio St. to 567 S. Bluff St. 920 ft. x 5 ft. / 4,600 sq. ft. \$ 17,664.00

South Illinois St. west side from W. Ohio St. to 510 S. Illinois St. 150 ft. x 5 ft. / 750 sq. ft. \$2,880.00

West Broadway St. north side 402 W. Broadway St. to Third St. in various areas

444 ft. x 5 ft. / 2,220 sq. ft. \$ 8,524.80

North Illinois St. east side from St. Marys Ave. to 431 N. Illinois St. in various areas

192 ft. x 5 ft. / 960 sq. ft. \$ 3,686.40

2007      11,680 sq. ft.                      \$ 45,902.40

West Marion St. north side from Third St. to 616 W. Marion St.

210 ft. x 5 ft. / 1,050 sq. ft. \$ 4,126.50

West Broadway St. north side from Third St. to Fourth St. in various areas

170 ft. x 5 ft. / 850 sq. ft. \$3,340.50

South Illinois St. east side from Market St. to South St. in various areas

242 ft. x 5 ft. / 1,210 sq. ft. \$4,755.30

South Illinois St. west side from Market St. to South St. in various areas

242 ft. x 5 ft. / 1,210 sq. ft. \$ 4,755.30

West South St. south side from South Main St. to South Illinois St.

292 ft. x 5 ft. / 1,460 sq. ft. \$ 5,737.80

West South St. north side from South Main St. to South Illinois St.

274 ft. x 5 ft. / 1,370 sq. ft. \$ 5,384.10

South Bluff St. east side from East South St. to Cleveland St. in various areas

386 ft. x 5 ft. / 1,930 sq. ft. \$ 7,584.90

South Bluff St. east side from Cleveland St. to Tioga Rd. in various areas

520 ft. x 5 ft. / 2,600 sq. ft. \$ 10,218.00

**2008      7745 sq. ft.      \$ 30,980**

West Market St. south side from Main St. to Illinois St. 165 ft. x 5 ft. / 825 sq. ft. \$ 3,300.00

West Market St. north side from Main St. to Illinois St. 350 ft. x 5 ft. / 1,750 sq. ft. \$7,000.00

Cleveland St. north side from alley between Bluff St. and Maple St. to Maple St. 150 ft. x 5 ft. /  
750 sq. ft. \$3,000.00

Maple St. West side from South St. to Cleveland St. 150 ft. x 5 ft. / 750 sq. ft. \$3,000.00

Maple St. East side from South St. to Cleveland St. 90 ft. x 5ft. / 450 sq. ft. \$ 1,800.00

West Ohio St. south side from Railroad St. to First St. 310 ft. x 5 ft. / 1550 sq. ft. \$6,200.00

West Ohio St. north side from Railroad St. to alley west of Illinois St. 144 ft. x 5 ft. / 2,880 sq. ft.  
\$ 2,880.00

West Ohio St. north side from Main St. to Illinois St. in various areas 30 ft. x 5 ft. / 150 sq. ft. \$600.00

West Ohio St. south side from Main St. to Illinois St. in various areas 30 ft. x 5 ft. / 150 sq. ft. \$600.00

East South St. north side from Main St. to alley by Twin Lakes School Administration Building

110 ft. x 5 ft. / 550 sq. ft. \$2200.00

West Washington St. north side at 502 W. Washington 20 ft. x 5 ft. / 100 sq. ft. \$ 400.00

2009            10,400 sq. ft.            \$ 41,600

Maple St. west side from Cleveland St. to Tioga Rd. 605 ft. x 5 ft. / 3,025 sq. ft.    \$ 12,100.00

Maple St. east side from Cleveland St. to Tioga Rd. 655 ft. x 5 ft. / 3,275 sq. ft.    \$ 13,100.00

Cleveland St. south side from Maple St. to East St. 480 ft. x 5 ft. / 2,400 sq. ft.    \$ 9,600.00

Cleveland St. north side from Maple St. to East St. 340 ft. x 5 ft. / 1,700 sq. ft.    \$ 6,800.00

2011            7,825 sq. ft.            \$ 31,143.50

West Harrison St. north side from First St. to Third St. 180 ft. x 5 ft. / 900 sq. ft.    \$ 3,582.00

West Harrison St. south side from First St. to Third St. 180 ft. x 5 ft. / 900 sq. ft.    \$ 3,582.00

South Railroad St. west side from Harrison St. to Jefferson St. 20 ft. x 5 ft. / 100 sq. ft.    \$ 398.00

West Jefferson St. north side from Main St. to Jefferson St. 150 ft. x 5 ft. / 750 sq. ft.    \$ 2,985.00

East Ohio St. south side from Main St to Bluff St. 175 ft. x 5 ft. / 875 sq. ft.    \$ 3,482.50

North Bluff St. east side from Washington St. to Marion St. 50 ft. x 5 ft. / 250 sq. ft.    \$ 995 .00

East South St. north side by Oaklawn School 250 ft. x 5 ft. / 1250 sq. ft.    \$ 4,975.00

North Second St. north side from Broadway St. to Washington St. 350 ft. x 4 ft. / 1,400 sq. ft.    \$ 5,572.00

North Second St. south side from Broadway St. to Washington St. 350 ft. x 4 ft. / 1,400 sq. ft.    \$ 5,572.00

2007      27,288 sq. ft.      \$ 107,241.84

North Main St. east side from Fisher St. to Rickey Rd. 3,373 ft. x 4 ft. / 13,492 sq. ft. \$ 53,023.56

North Main St. west side from Fisher St. to Rickey Rd. 3,449 ft. x 4 ft. / 13,796 sq. ft. \$ 54,218.28

2010      7,935 sq. ft.      \$ 31,581.30

South Sixth St. from Broadway St. to Ohio St. 1,587 ft. x 5 ft. / 7,935 sq. ft. \$ 31,581.30

2010      40,670 sq. ft.      \$ 59,320.00

South Sixth St. Walk, bicycle path from Ohio St. to Gordon Rd.

4,067 ft. x 10 ft. / 40,670 sq. ft. \$ 59,320.00

2011      14,660 sq. ft.      \$ 44,620.00

North Sixth St. Walk, bicycle path from Rickey Rd. to south of Northwestern Ave.

1,466 ft. x 10 ft. / 14,660 sq. ft. \$ 44,620.00

2012      4,224 sq. ft.      \$ 16,262.40

Reynolds Blvd. east side from Pierce Circle to alley 210 ft. x 4 ft. / 840 sq. ft. \$ 3,238.00

Reynolds Blvd. west side from Pierce Circle to alley 210 ft. x 4 ft. / 840 sq. ft. \$ 3,238.00

Pierce Circle and Reynolds Blvd. ramps 144 sq. ft. \$ 554.40

Pierce Circle 600 ft. x 4 ft. / 2400 sq. ft. \$ 9,240.00

2013      2,868 sq. ft.      \$ 17,217.00

North Dewey St. west side from Broadway St. to Foster St. in various areas

79 ft. x 5ft. / 395 sq. ft. \$ 1,652.00

Harrison St. south side from Railroad St. to First St. in various areas

36 ft. x 5 ft. / 180 sq. ft. \$ 806.40

Harrison St. north side at alley entrance 18 ft. x 15 ft. / 270 sq. ft. \$1,208.60

Juanita St. west side from Ohio St. to school driveway 27 ft. x 5 ft. / 135 sq. ft. \$ 565.00

Entrance to city hall parking lot 63.5 ft. x 5 ft. / 318 sq. ft. \$ \$1,330.00

North Main St. west side between Marion St. and Foster St.

10ft. x 10 ft. and 5 ft. x 5 ft. / 125 sq. ft. \$ 650.00

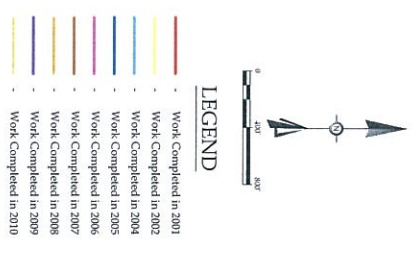
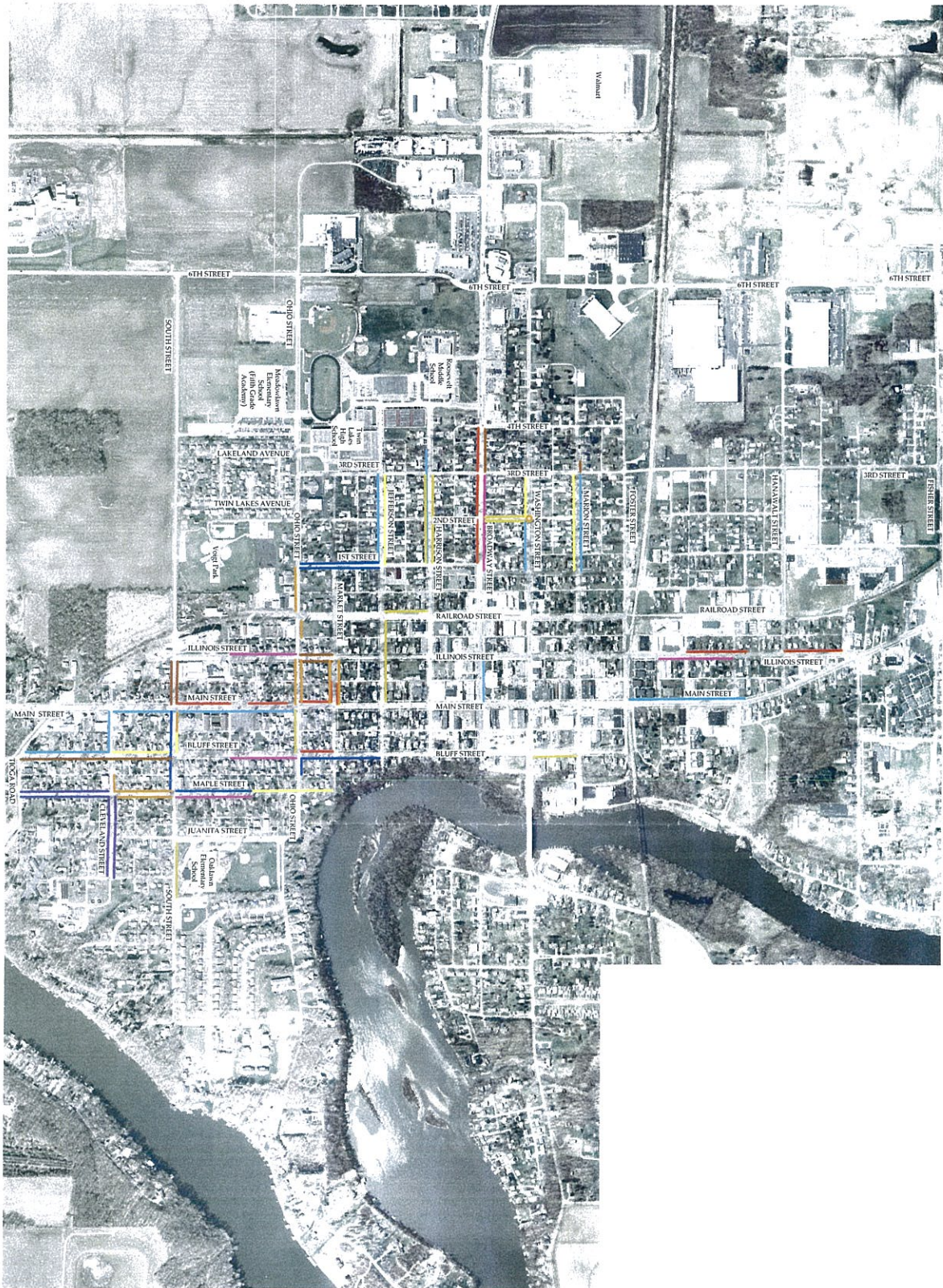
North Main St. east side from city hall entrance to Marion St.

79.5 ft. x 10 ft. / 795 sq. ft. \$ 8,288.00

South Main St. east side between Fraser Ave. and South St.

130 ft. x 5 ft. / 650 sq. ft. \$ 2,717.00





**COMPLETED PROJECTS**

SAFE ROUTES TO SCHOOL (SRTS)

TRANSPORTATION ENHANCEMENT (TE)

CITY OF MONTICELLO  
WHITE COUNTY  
INDIANA

**monticello**  
INDIANA  
LIFE WITH A SPLASH



