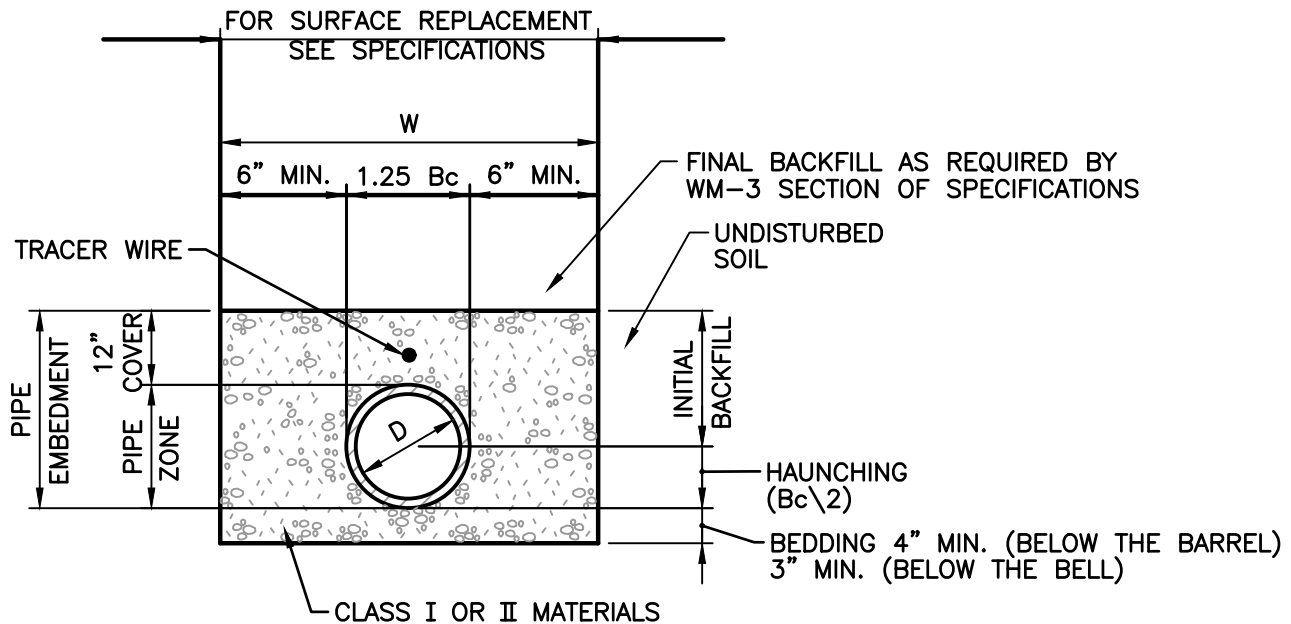


WATER PROJECT STANDARD DETAILS

**WATER SYSTEM STANDARD DETAILS
TABLE OF CONTENTS**

First Class Pipe Laying Method, Rigid Conduits (Ductile Iron) in Pavement AreasW-1
First Class Pipe Laying Method (Ductile Iron) in Non-Pavement AreasW-2
Thrust Blocking Details for Water MainW-3
Hydrant DetailW-4
Gate Valve and BoxW-5
Residential Meter / Service Installation.....W-6
Meter Installation ¾” and 1” ServiceW-7
Commercial Meter Installation 1.5” Size or GreaterW-8
Water Service Line Jack and Bore DetailW-9



W = MAXIMUM ALLOWABLE TRENCH WIDTH FOR PIPE AS PER ASTM
 NOT TO EXCEED FOUR (4) FEET FOR 6" THROUGH 24" PIPE
 NOR SIX (6) FEET FOR 27" THROUGH 48" PIPE
 D = PIPE DIAMETER (INTERNAL)
 B_c = PIPE DIAMETER (EXTERNAL)

NOTES:

1. COMPACTED BEDDING STOPS AT A POINT 12" ABOVE THE TOP OF PIPE. BACKFILLING ABOVE THIS POINT SHALL BE IN ACCORDANCE WITH THE SPECIFICATIONS AND AS REQUIRED BY NOTE 3 BELOW.
2. WHEN CLASS I MATERIAL IS USED FOR BEDDING, COMPACTION MAY BE ACCOMPLISHED BY HAND OR MECHANICAL TAMPING OR BY "WALKING" THE MATERIAL IN.
3. WHEN CLASS II MATERIAL IS USED FOR BEDDING, COMPACTION SHALL BE ACCOMPLISHED ONLY BY HAND OR MECHANICAL TAMPING TO A MINIMUM OF 85% STANDARD PROCTOR DENSITY.
4. WORK FALLING UNDER THE JURISDICTION OF THE INDIANA DEPARTMENT OF TRANSPORTATION (INDOT) SHALL UTILIZE COMPACTED GRANULAR BACKFILL MATERIAL FOR INITIAL AND FINAL BACKFILL ANYWHERE WITHIN 12 FEET OF THE EDGE OF PAVEMENT. FOR ALL OTHER NON-INDOT PAVEMENT AREAS (INCLUDING BOTH HARD SURFACED AND COMPACTED AGGREGATE), COMPACTED GRANULAR BACKFILL MATERIAL SHALL BE USED WITHIN 5 FEET OF THE EDGE OF THE PAVEMENT.

**FIRST CLASS PIPE LAYING METHOD, RIGID
 CONDUITS (DUCTILE IRON) IN PAVEMENT AREAS**

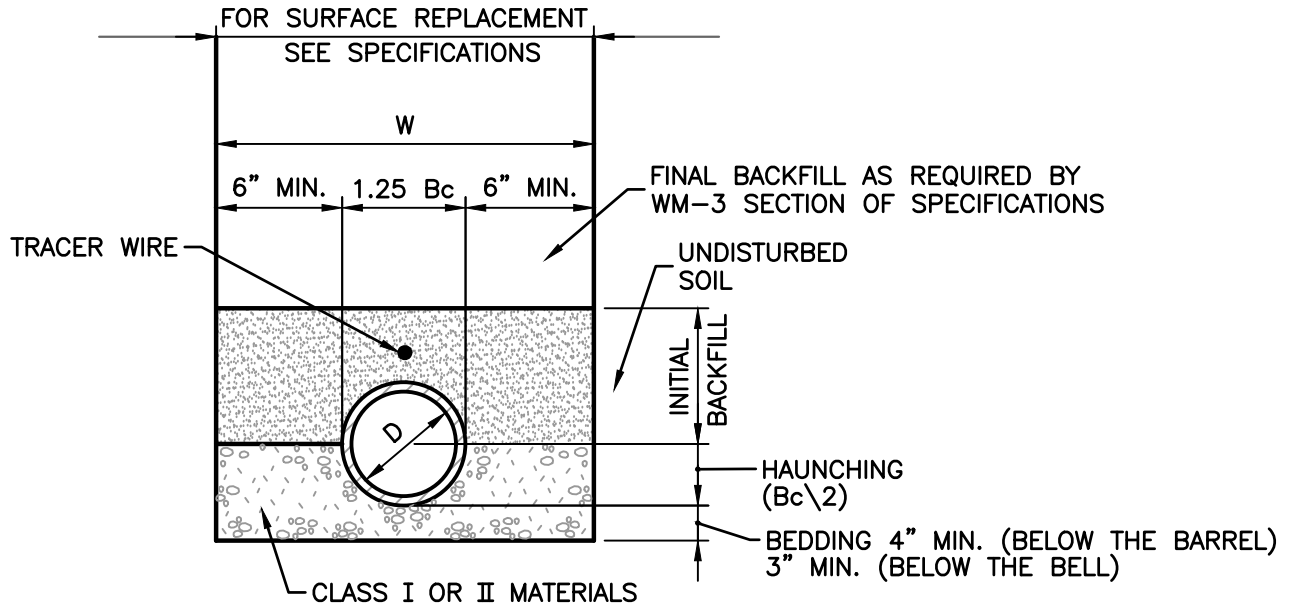
REVISION DATE

DATE: AUGUST 2019

**CITY of MONTICELLO, INDIANA
 STANDARD DETAILS
 SANITARY SEWER**

FIGURE

W-1



W = MAXIMUM ALLOWABLE TRENCH WIDTH FOR PIPE AS PER ASTM NOT TO EXCEED FOUR (4) FEET FOR 6" THROUGH 24" PIPE NOR SIX (6) FEET FOR 27" THROUGH 48" PIPE

D = PIPE DIAMETER (INTERNAL)

B_c = PIPE DIAMETER (EXTERNAL)

NOTES:

1. COMPACTED BEDDING STOPS AT A POINT 12" ABOVE THE TOP OF PIPE. BACKFILLING ABOVE THIS POINT SHALL BE IN ACCORDANCE WITH THE SPECIFICATIONS AND AS REQUIRED BY NOTE 3 BELOW.
2. WHEN CLASS I MATERIAL IS USED FOR BEDDING, COMPACTION MAY BE ACCOMPLISHED BY HAND OR MECHANICAL TAMPING OR BY "WALKING" THE MATERIAL IN.
3. WHEN CLASS II MATERIAL IS USED FOR BEDDING, COMPACTION SHALL BE ACCOMPLISHED ONLY BY HAND OR MECHANICAL TAMPING TO A MINIMUM OF 85% STANDARD PROCTOR DENSITY.
4. WORK FALLING UNDER THE JURISDICTION OF THE INDIANA DEPARTMENT OF TRANSPORTATION (INDOT) SHALL UTILIZE COMPACTED GRANULAR BACKFILL MATERIAL FOR INITIAL AND FINAL BACKFILL ANYWHERE WITHIN 12 FEET OF THE EDGE OF PAVEMENT. FOR ALL OTHER NON-INDOT PAVEMENT AREAS (INCLUDING BOTH HARD SURFACED AND COMPACTED AGGREGATE), COMPACTED GRANULAR BACKFILL MATERIAL SHALL BE USED WITHIN 5 FEET OF THE EDGE OF THE PAVEMENT.

**FIRST CLASS PIPE LAYING METHOD, RIGID
CONDUITS (DUCTILE IRON) IN NON-PAVEMENT AREAS**

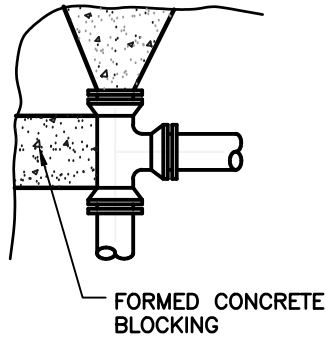
REVISION DATE

**CITY of MONTICELLO, INDIANA
STANDARD DETAILS
SANITARY SEWER**

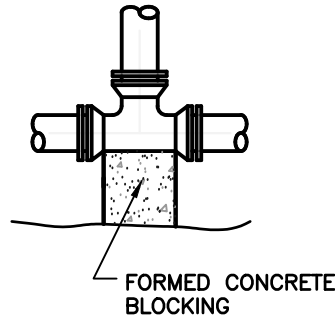
FIGURE

W-2

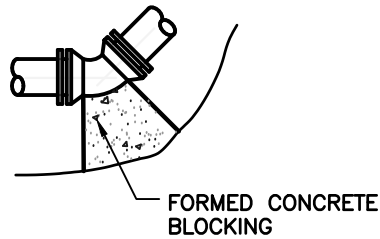
DATE: AUGUST 2019



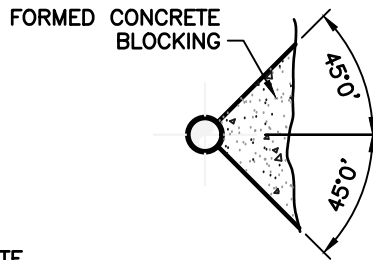
DETAIL A



DETAIL B



DETAIL C



TYP. PROFILE

TABLE OF DIMENSION FOR CONCRETE BLOCKING

SIZE	TEE				PLUG					90° BEND				45° BEND				22½° BEND				11½° BEND			
	L	T	W	D	L	T	W	D	s	L	T	W	D	L	T	W	D	L	T	W	D	L	T	W	D
4"	18"	12"	12"	8"	18"	12"	18"	18"	2"	24"	12"	24"	8"	18"	8"	12"	8"	18"	8"	12"	8"	15"	8"	12"	6"
6"	18"	12"	12"	8"	18"	12"	18"	18"	2"	24"	15"	24"	8"	18"	10"	12"	8"	18"	10"	12"	8"	18"	10"	18"	6"
8"	30"	12"	24"	8"	30"	18"	30"	24"	4"	36"	16"	30"	8"	24"	12"	18"	8"	24"	18"	18"	8"	24"	12"	18"	8"
10"	36"	18"	30"	10"	36"	18"	36"	24"	4"	48"	20"	36"	10"	30"	14"	24"	10"	30"	14"	24"	10"	24"	14"	18"	8"
12"	48"	18"	36"	10"	42"	18"	42"	24"	4"	54"	24"	48"	10"	36"	16"	30"	10"	36"	16"	30"	10"	30"	16"	24"	10"
14"	54"	24"	42"	12"	48"	18"	48"	30"	6"	60"	28"	60"	12"	42"	16"	42"	12"	42"	16"	42"	12"	33"	16"	27"	12"
16"	60"	24"	48"	12"	54"	18"	54"	30"	6"	66"	32"	63"	12"	48"	18"	48"	12"	48"	18"	48"	12"	36"	18"	30"	12"
18"	66"	30"	54"	14"	60"	24"	60"	36"	6"	66"	36"	66"	14"	54"	18"	54"	14"	54"	18"	54"	14"	39"	18"	33"	14"
20"	72"	30"	60"	14"	66"	24"	66"	36"	8"	72"	40"	69"	14"	60"	20"	60"	14"	60"	20"	60"	14"	42"	20"	36"	14"
24"	84"	36"	72"	18"	78"	30"	78"	42"	8"	84"	48"	75"	18"	72"	22"	72"	18"	72"	22"	72"	18"	48"	22"	42"	18"

NOTES:

- FOR TEE WITH BRANCH UNEQUAL TO RUN USE TEE TYPE KICKER WITH D, L, AND W DIMENSIONS THE SAME AS THOSE FOR PLUG WITH SAME DIAMETER AS BRANCH OF TEE, SELECT "T" DIMENSIONS FROM TEE TABLE UNDER COLUMN HEADED BY THE SIZE OF THE BRANCH.
- IF EXACT SIZE PIPE BLOCKING IS NOT SHOWN USE NEXT LARGER SIZE.
- DEPTH "D" MAY BE GREATER THAN SPECIFIED TO ALLOW WORKING SPACE. BLOCKING MUST BE PLACED AGAINST UNDISTURBED EARTH OR ROCK.

THRUST BLOCKING DETAILS FOR WATER MAIN

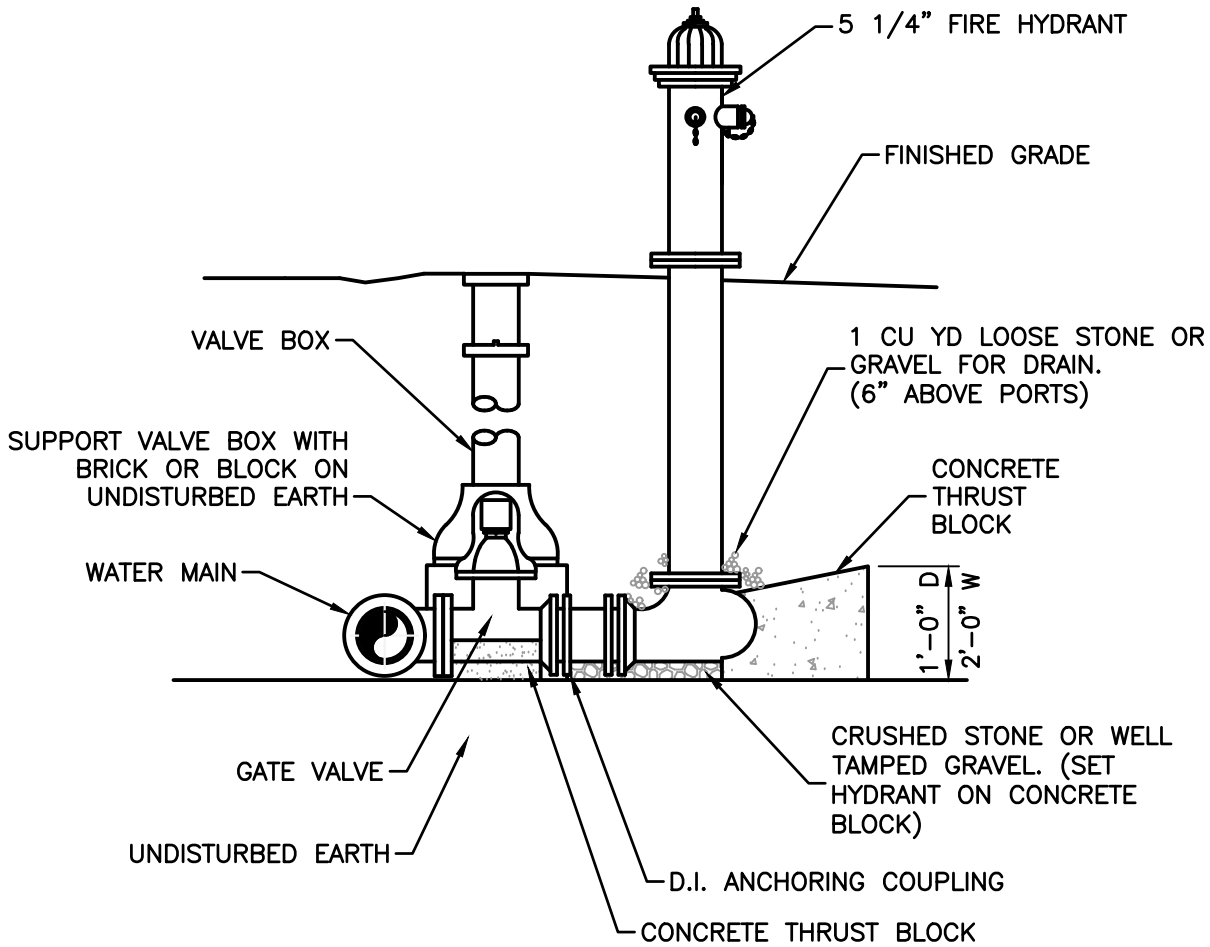
REVISION DATE

**CITY of MONTICELLO, INDIANA
STANDARD DETAILS
SANITARY SEWER**

FIGURE

W-3

DATE: AUGUST 2019



HYDRANT DETAIL

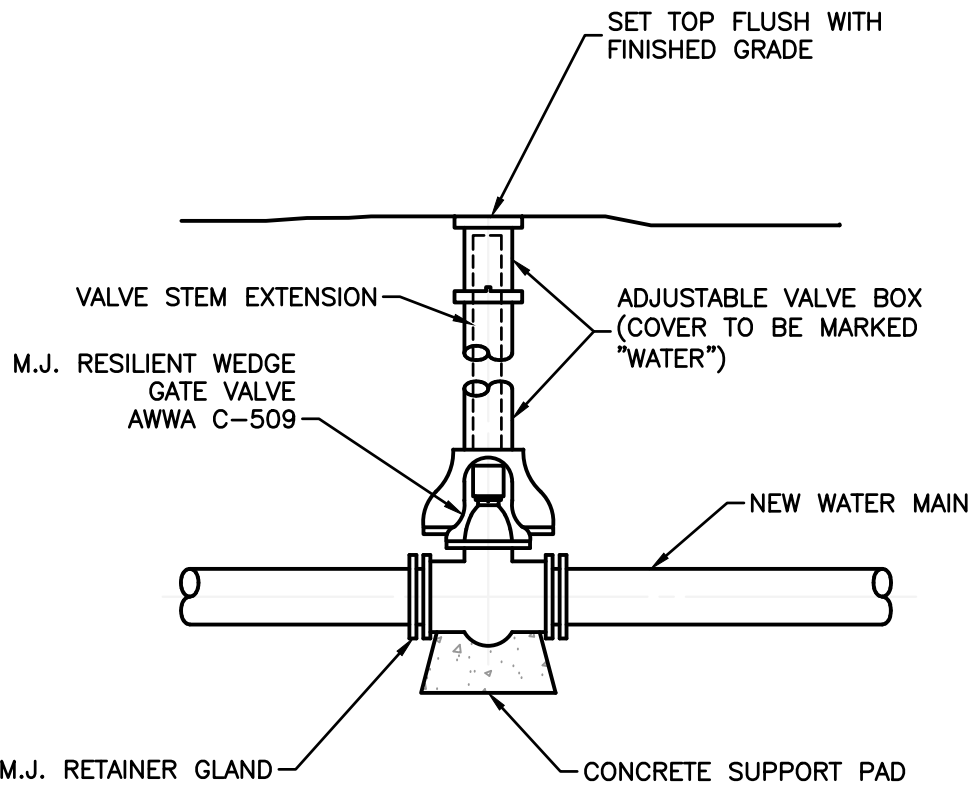
CITY of MONTICELLO, INDIANA
 STANDARD DETAILS
 SANITARY SEWER

FIGURE

W-4

REVISION DATE

DATE: AUGUST 2019



THRUST BLOCKING DETAILS FOR WATER MAIN

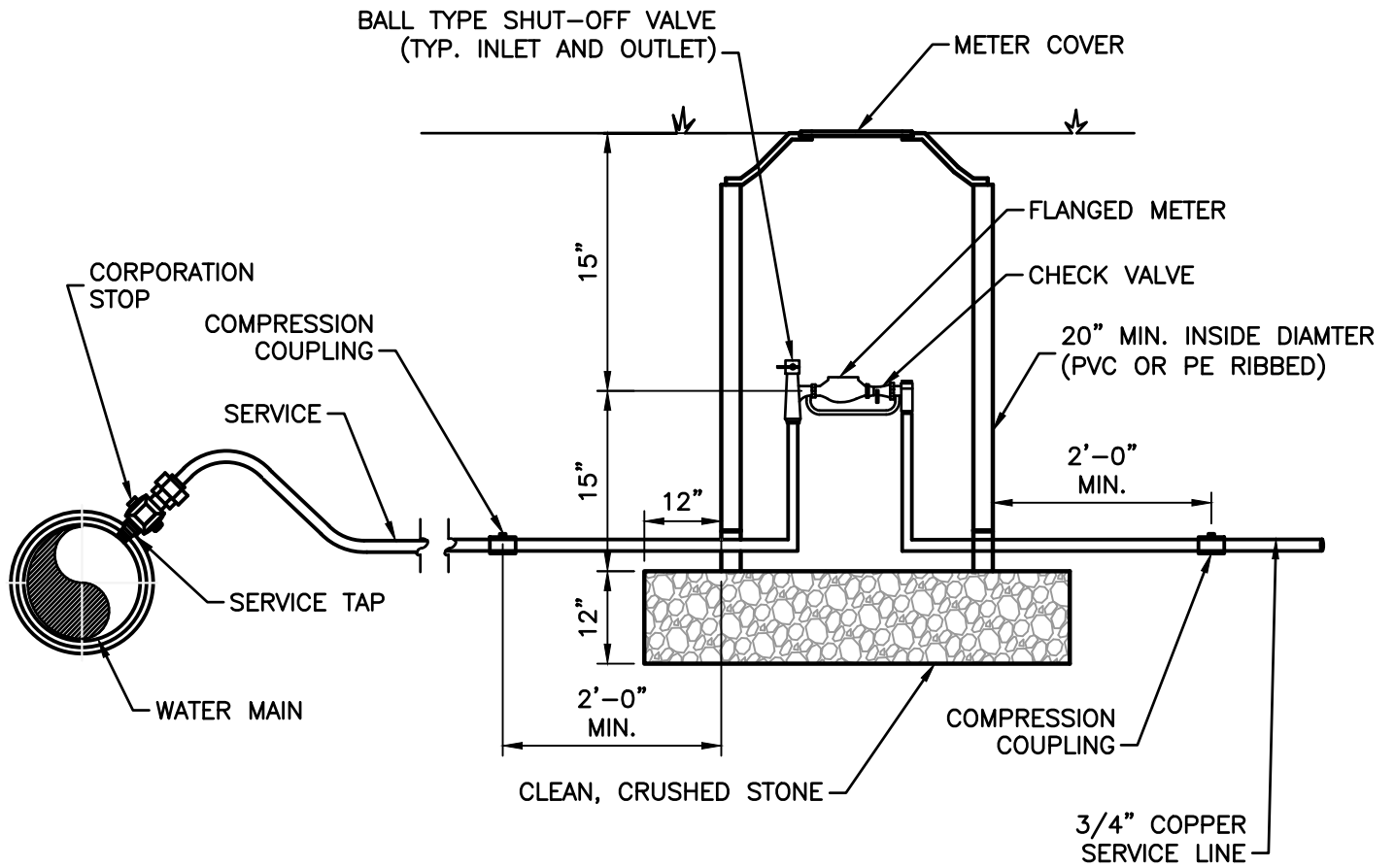
CITY of MONTICELLO, INDIANA
STANDARD DETAILS
SANITARY SEWER

FIGURE

W-3

REVISION DATE

DATE: AUGUST 2019



RESIDENTIAL METER/SERVICE INSTALLATION

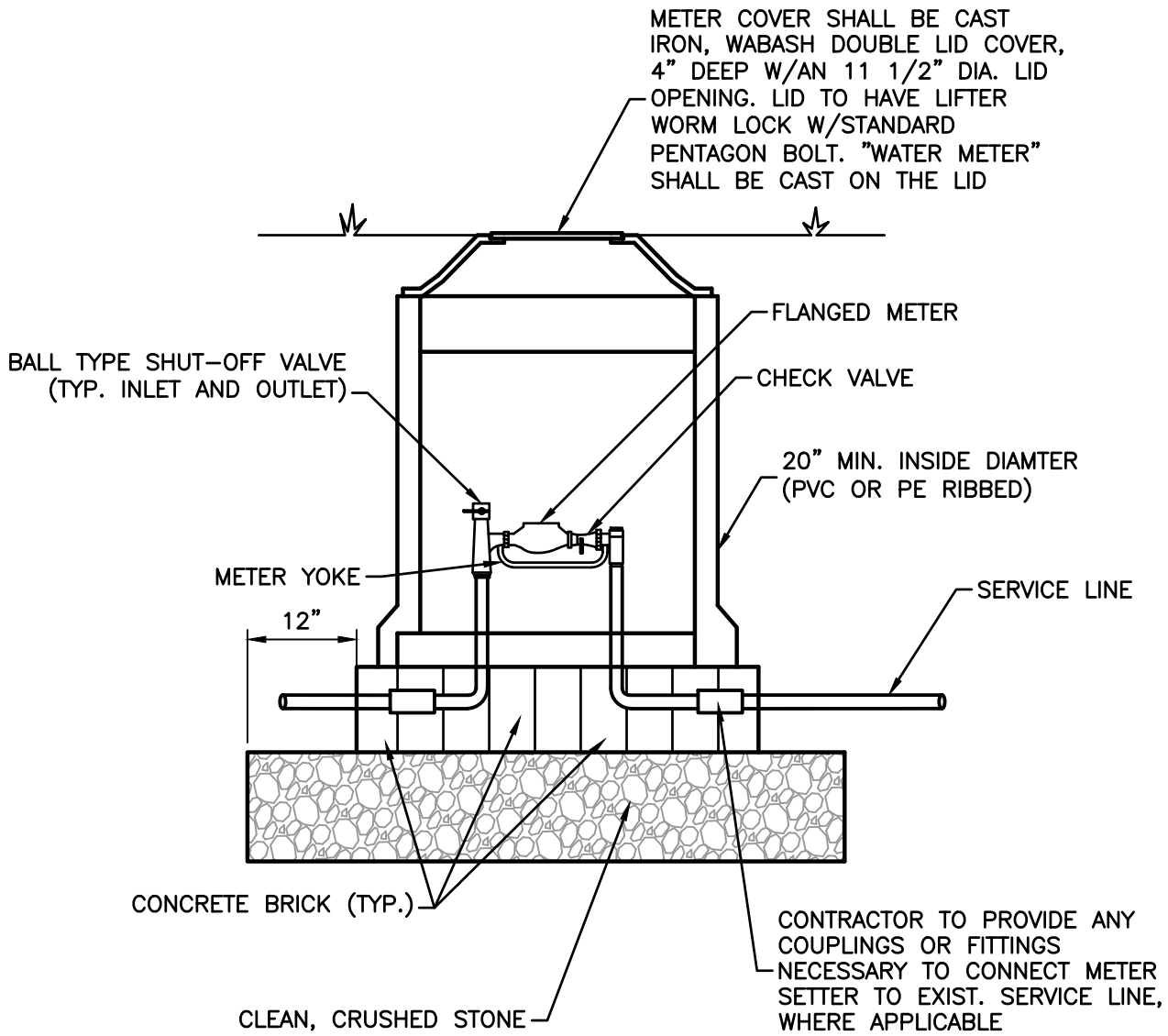
CITY of MONTICELLO, INDIANA
 STANDARD DETAILS
 SANITARY SEWER

FIGURE

W-6

REVISION DATE

DATE: AUGUST 2019



METER INSTALLATION
 3/4" AND 1" SERVICE

CITY of MONTICELLO, INDIANA
 STANDARD DETAILS
 SANITARY SEWER

FIGURE

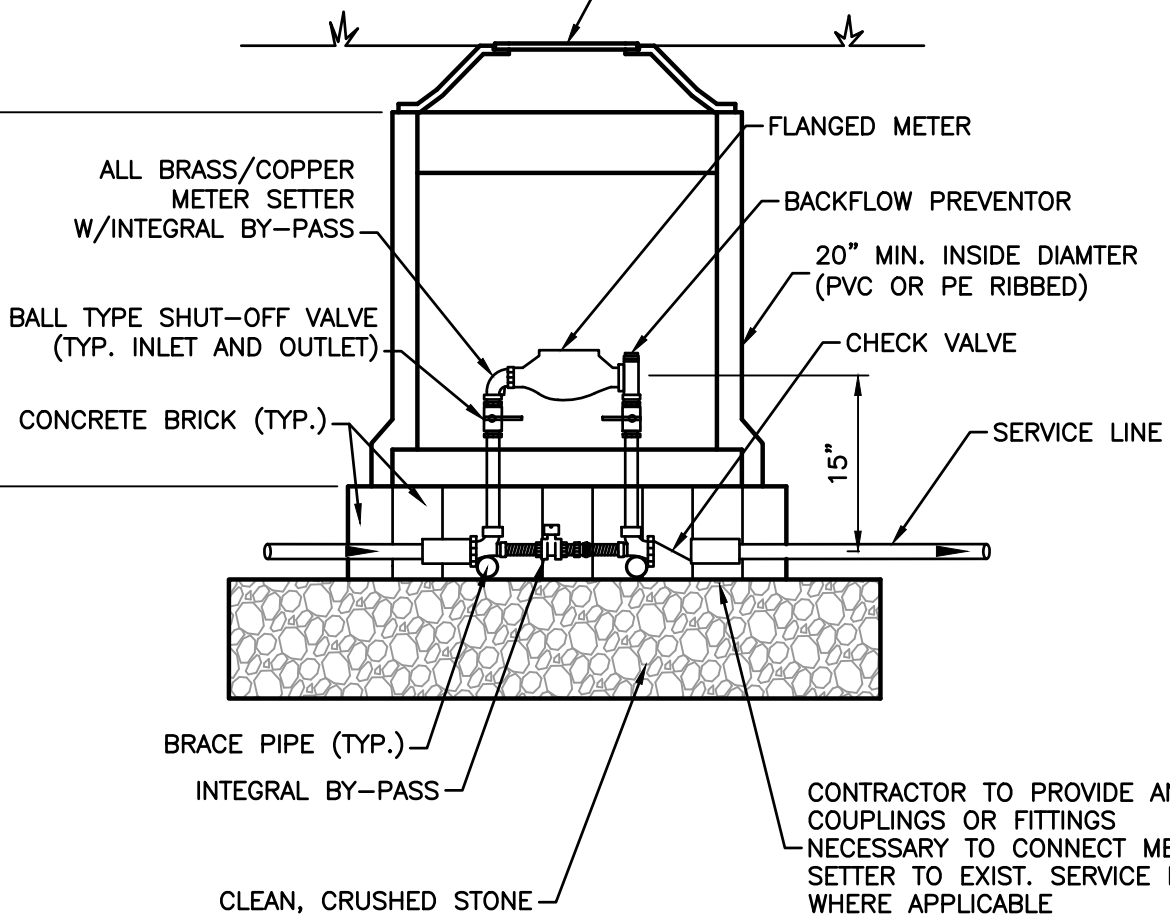
W-7

REVISION DATE

DATE: AUGUST 2019

36" (OR AS REQUIRED TO CONFORM WITH THE DEPTH OF THE EXISTING SERVICE LINE IF APPLICABLE)

METER COVER SHALL BE CAST IRON, WABASH DOUBLE LID COVER, 4" DEEP W/AN 11 1/2" DIA. LID OPENING. LID TO HAVE LIFTER WORM LOCK W/STANDARD PENTAGON BOLT. "WATER METER" SHALL BE CAST ON THE LID



COMMERCIAL METER INSTALLATION
1.5" SIZE OR GREATER

CITY of MONTICELLO, INDIANA
STANDARD DETAILS
SANITARY SEWER

REVISION DATE

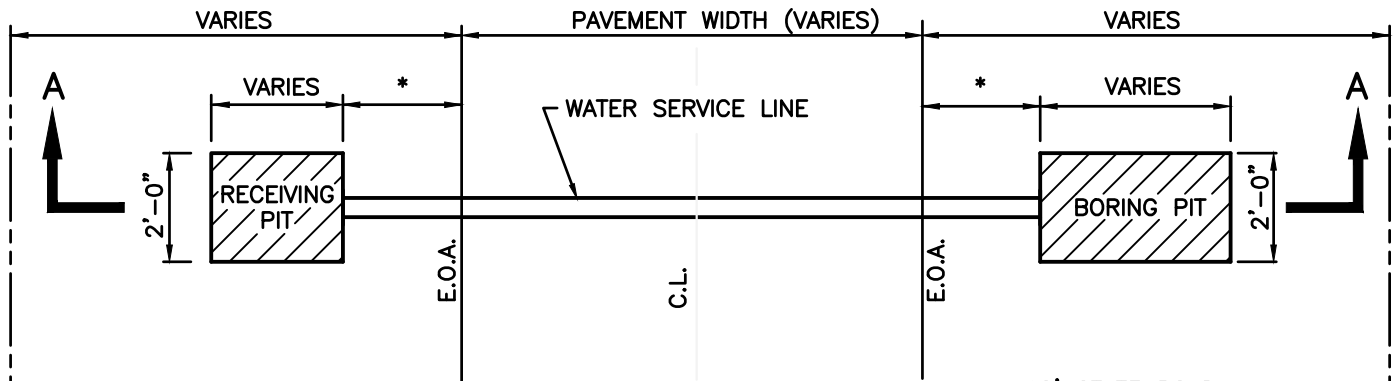
FIGURE

W-8

DATE: AUGUST 2019

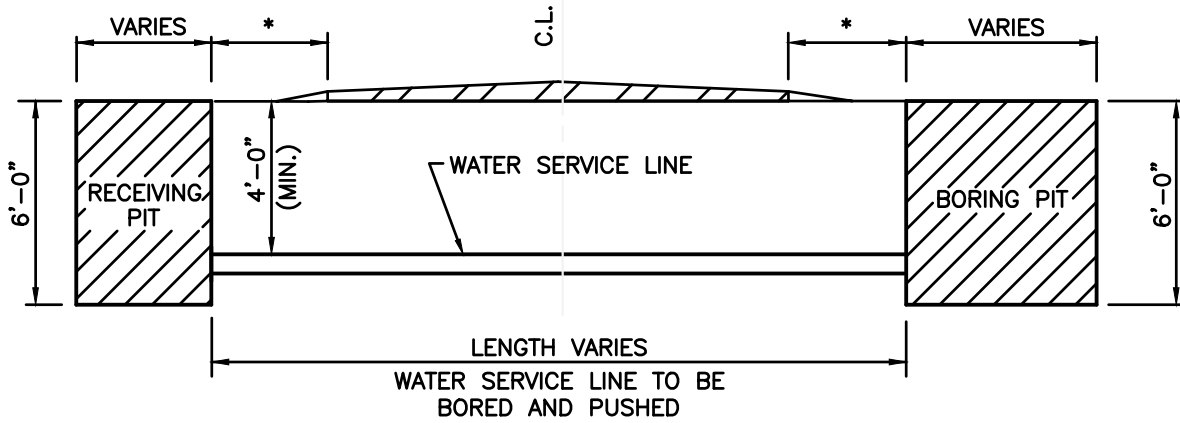
APP. R/W

APP. R/W



PLAN

* = 12' STATE ROAD
5' COUNTY ROAD



CONSTRUCTION NOTE:
 ANY DISTURBED AREAS WITHIN RIGHT-OF-WAY
 TO BE RESTORED TO SAME OR BETTER
 CONDITION AS PRIOR TO CONSTRUCTION.

WATER SERVICE LINE JACK AND BORE DETAIL

REVISION DATE

**CITY of MONTICELLO, INDIANA
 STANDARD DETAILS
 SANITARY SEWER**

FIGURE

W-9

DATE: AUGUST 2019