

STORM SEWER STANDARD DETAILS

**STORM SEWER STANDARD DETAILS
TABLE OF CONTENTS**

Standard Manhole Detail..... ST-1

Precast Manhole Detail Over Existing Storm..... ST-2

Standard Frame and Lid..... ST-3

Standard Catch Basin and Inlet Detail ST-4

Standard Underdrain Detail ST-5

Flared End Section Detail..... ST-6

Wet-Bottom Detention Facility (With Fence)..... ST-7

Wet-Bottom Detention Facility (Without Fence) ST-8

Orifice Plate Detail..... ST-9

Overflow Weir Detail..... ST-10

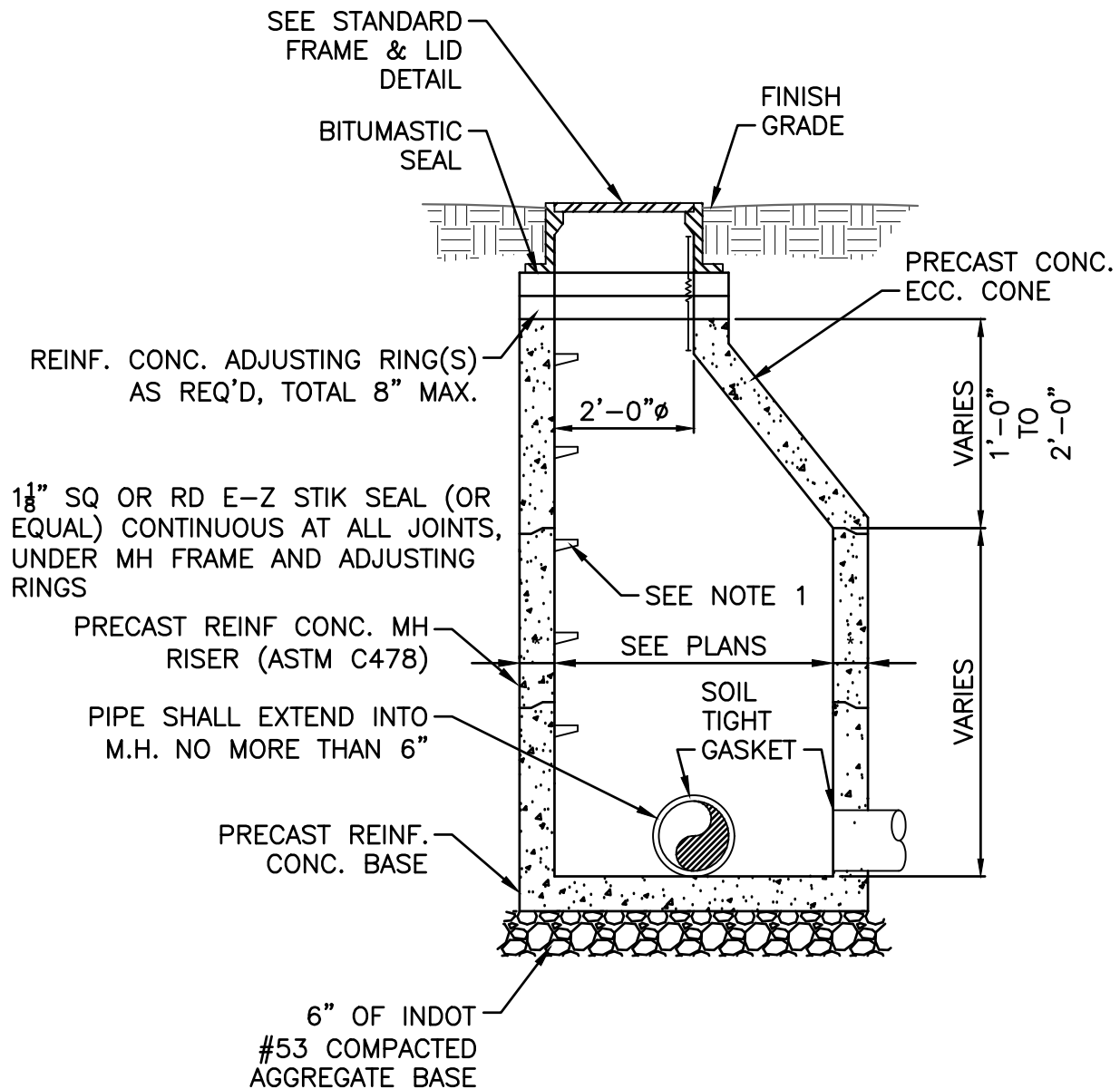
Typical Existing Manhole Entry Detail Refer to S-5

Typical Adjusting Ring..... Refer to S-6/7

Typical Chimney Seal Detail Refer to S-10

Typical Trench for Flexible Pipe..... Refer to S-15

Typical Trench for Rigid Pipe Refer to S-16



NOTES:

1. COPOLYMER/STEEL MH STEPS AS MANUFACTURED BY M.A. INDUSTRIES, INC., OR EQUAL, AT 16" O.C. (MAX.)

STANDARD MANHOLE DETAIL

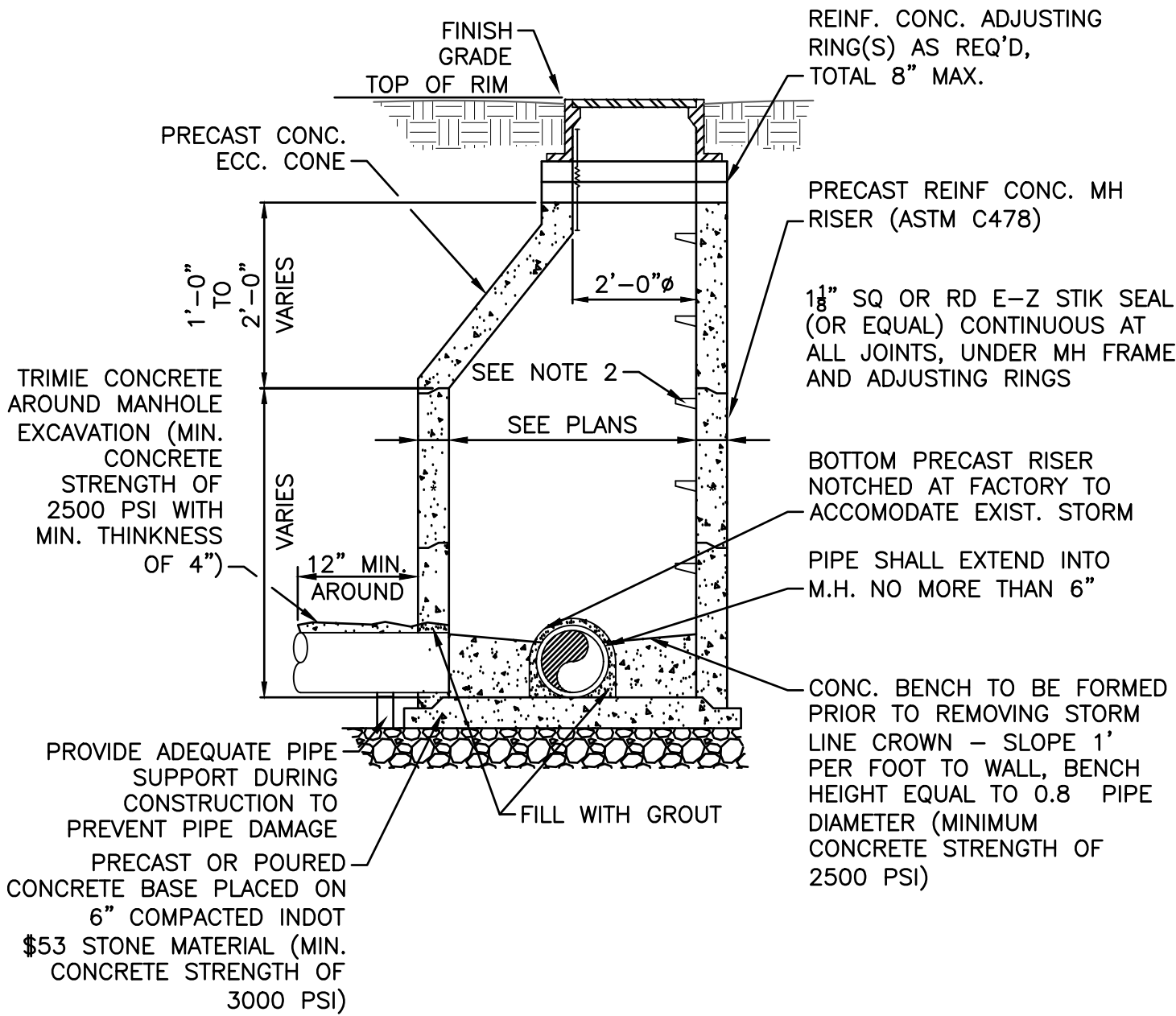
**CITY of MONTICELLO, INDIANA
STANDARD DETAILS
STORM SEWER**

FIGURE

ST-1

REVISION DATE

DATE: AUGUST 2019



NOTES:

1. INTERNAL MH FRAME—CHIMNEY SEAL AS MANUFACTURED BY CRETEX SPECIALTY PRODUCTS OR EQUAL REQ'D FOR ALL MANHOLES IN PAVED AREAS ONLY.
2. COPOLYMER/STEEL MH STEPS AS MANUFACTURED BY M.A. INDUSTRIES, INC., OR EQUAL, AT 16" O.C. (MAX.)

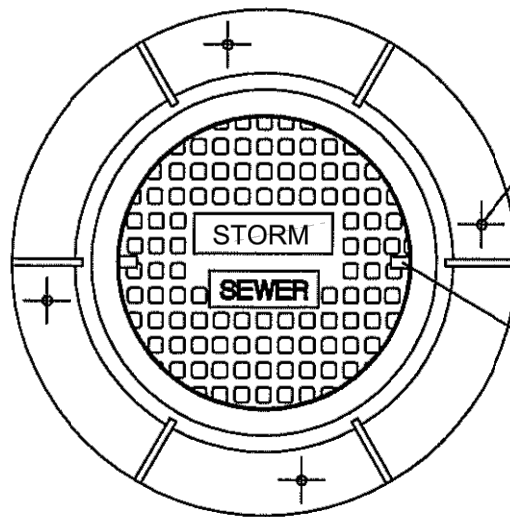
PRECAST MANHOLE DETAIL OVER EXISTING STORM

REVISION DATE

**CITY of MONTICELLO, INDIANA
STANDARD DETAILS
STORM SEWER**

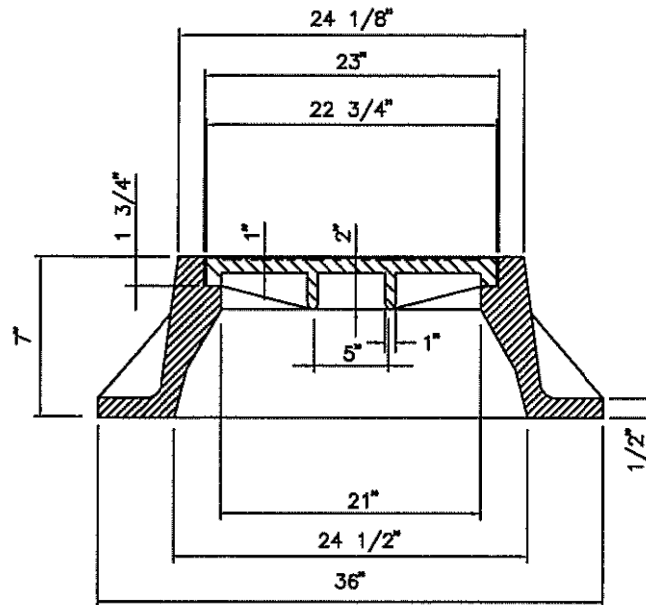
DATE: AUGUST 2019

FIGURE
ST-2



(4) 1" [25mm] CORED ANCHOR BOLT HOLES 90° APART ON A 33" [838mm] DIA. B.C.

(2) CONCEALED PICKHOLES PER NF-9104-A



NOTE: METAL: CAST GRAY IRON ASTM A-48 CL.358
 FINISH: NOT PAINTED
 R-1772C BY NEENAH FOUNDRY OR
 1875-3 BY EAST JORDAN IRON WORKS

STANDARD FRAME & LID

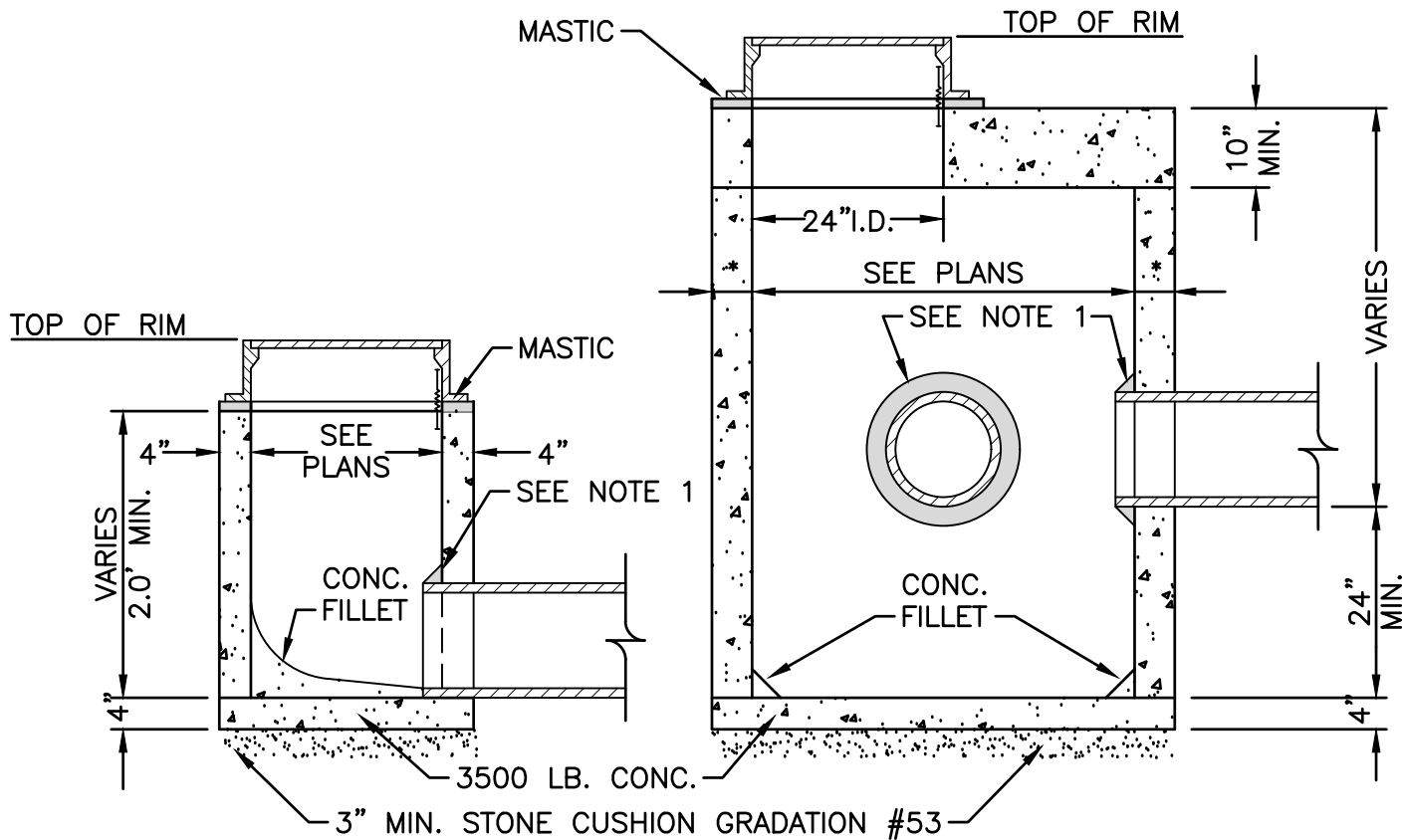
CITY of MONTICELLO, INDIANA
 STANDARD DETAILS
 STORM SEWER

FIGURE

ST-3

REVISION DATE

DATE: AUGUST 2019

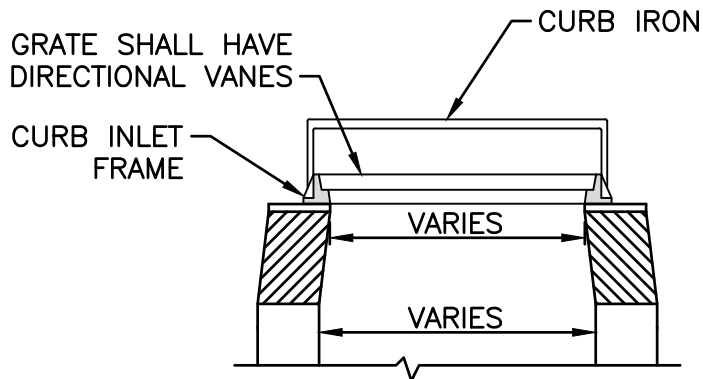


INLET

CATCH BASIN

NOTES:

1. USE SOIL TIGHT GASKET OR EQUAL.
2. WHERE DEPTH FROM TOP OF CASTING TO INVERT IS LESS THAN 5'-0", USE FLAT TOP MANHOLE TYPE "C" IN LIEU OF ECCENTRIC CONE
3. WATERTIGHT SEAL IS REQ'D BETWEEN PRECAST RISER AND STORM SEWER PIPE.
4. COPOLYMER/STEEL MH STEPS AS MANUFACTURED BY M.A. INDUSTRIES, INC., OR EQUAL, AT 16" O.C. (MAX.)



CURB INLET CASTING

STANDARD CATCH BASIN & INLET DETAIL

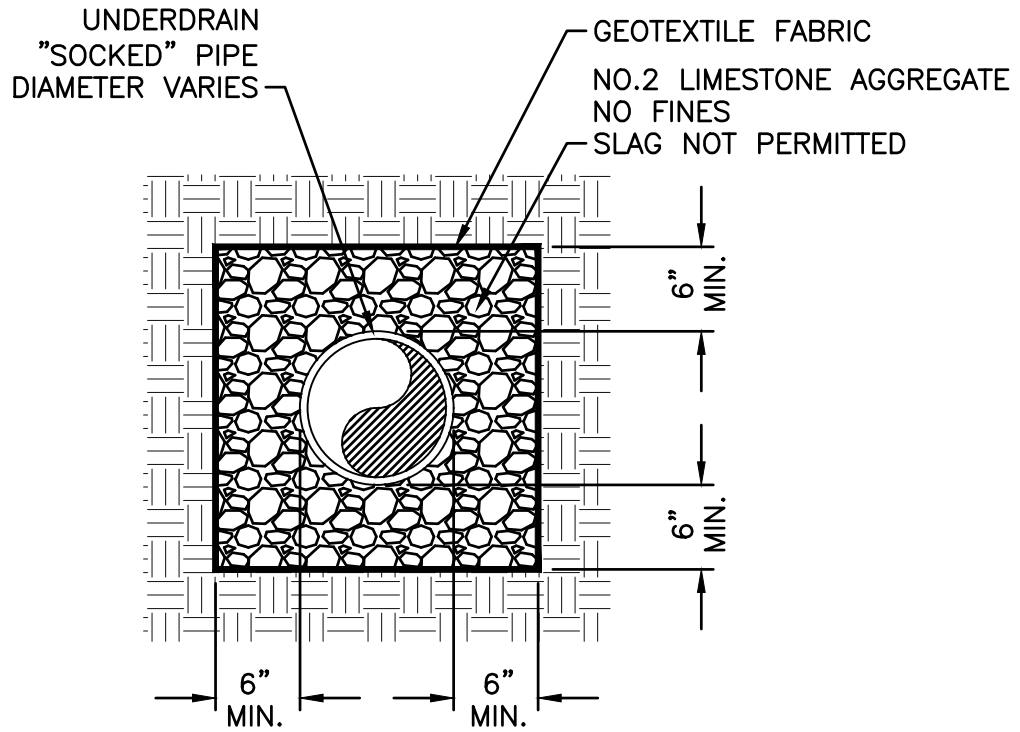
REVISION DATE

CITY of MONTICELLO, INDIANA
STANDARD DETAILS
STORM SEWER

DATE: AUGUST 2019

FIGURE

ST-4



STANDARD UNDERDRAIN DETAIL

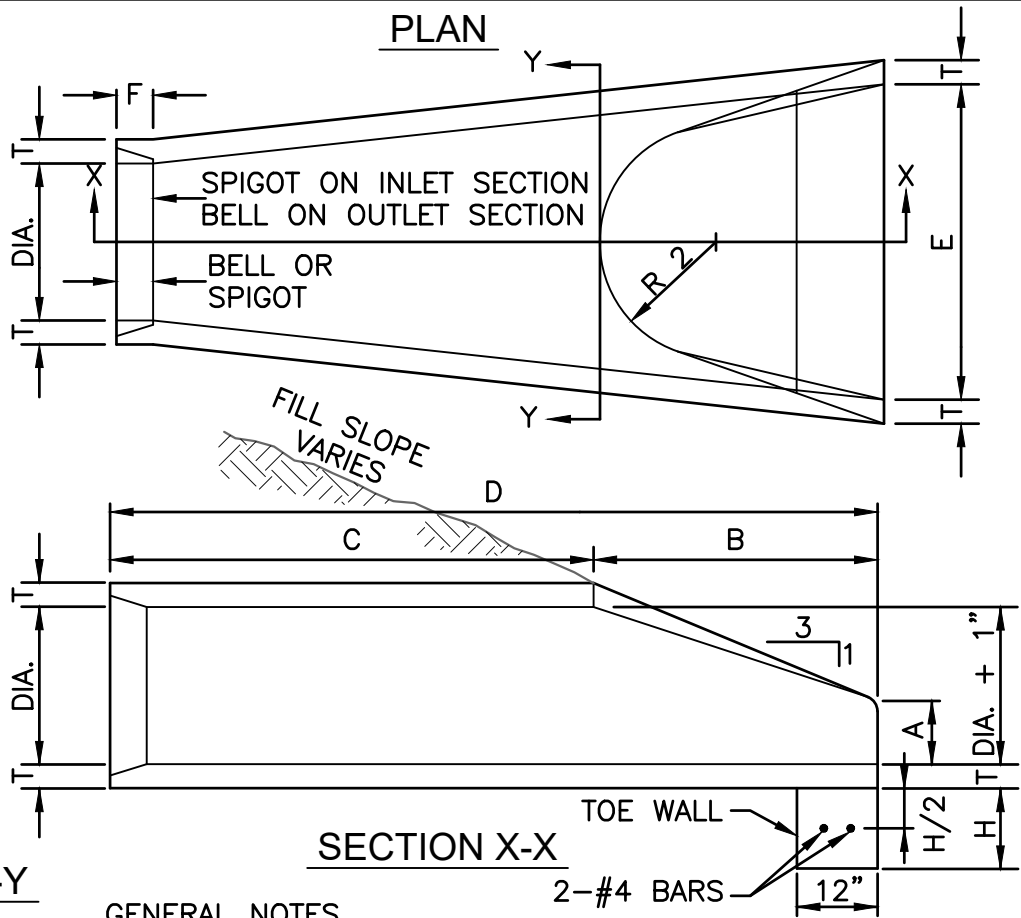
CITY of MONTICELLO, INDIANA
STANDARD DETAILS
STORM SEWER

FIGURE

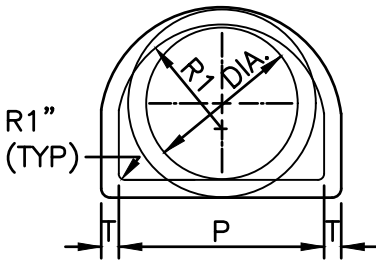
ST-5

REVISION DATE

DATE: AUGUST 2019



SECTION Y-Y



GENERAL NOTES

1. END SECTIONS SHALL CONFORM TO STANDARD STRENGTH REINFORCED CONCRETE PIPE OF LIKE DIAMETER AS PER STANDARD SPECIFICATIONS.
2. JOINT BETWEEN END SECTION & PIPE CULVERT TO BE MADE BY REINFORCED CONCRETE COLLAR OR COLD ADHESIVE PREFORMED PLASTIC CASSET.
3. SAFETY SCREENS HAVING A MAXIMUM OPENING OF FOUR (4) INCHES SHALL BE PROVIDED FOR ANY PIPE OR OPENING.

DIA.	T	BELL OR SPIGOT	A	B	C	D	E	P	R 1	R 2	F	H	WEIGHT (LBS.)
15"	2"	2"	6"	2'-3"	3'-10"	6'-1"	2'-6"	24"	12"	11"	3"	12"	740
18"	2"	2"	9"	2'-3"	3'-10"	6'-1"	3'-0"	29"	15"	12"	4"	15"	990
24"	3"	2"	9"	3'-7"	2'-6"	6'-1"	4'-0"	33"	16"	14"	4"	18"	1520
30"	3"	3"	1'-0"	4'-6"	1'-7"	6'-1"	5'-0"	37"	18"	15"	5"	21"	2190
36"	4"	3"	1'-3"	5'-3"	2'-10"	8'-1"	6'-0"	47"	24"	20"	5"	21"	4100
42"	4"	3"	1'-9"	5'-3"	2'-11"	8'-2"	6'-6"	53"	27"	22"	5"	24"	5380
48"	5"	4"	2'-0"	6'-0"	2'-2"	8'-2"	7'-0"	56"	28"	22"	5"	24"	6550
54"	5"	4"	2'-3"	5'-5"	2'-11"	8'-4"	7'-6"	65"	33"	24"	6"	24"	8040
60"	6"	5"	2'-6"	5'-0"	3'-3"	8'-3"	8'-0"	72"	36"	24"	6"	24"	8750
66"	6"	5"	2'-0"	6'-6"	1'-9"	8'-3"	8'-6"	72"	36"	24"	7"	24"	10630
72"	7"	6"	2'-0"	6'-6"	1'-9"	8'-3"	9'-0"	77"	38"	24"	7"	24"	12520

FLARED END SECTION DETAIL

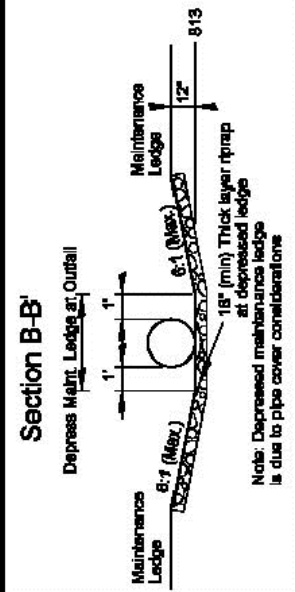
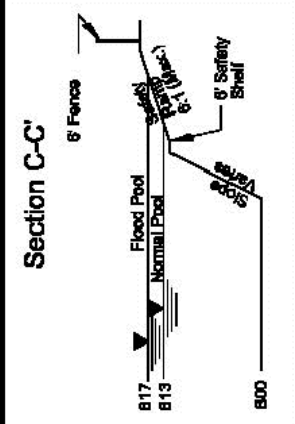
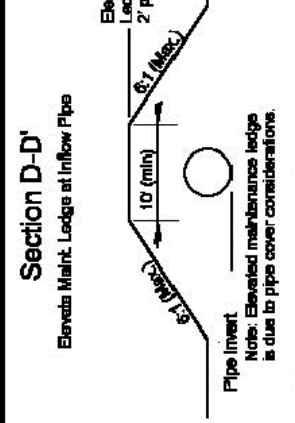
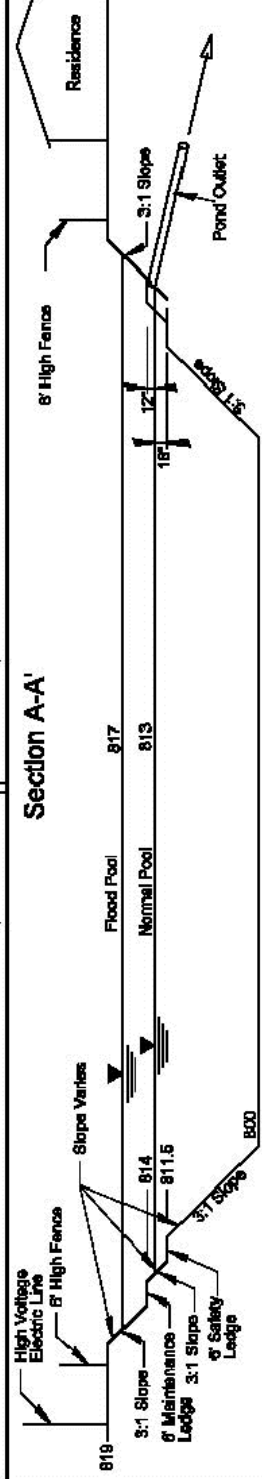
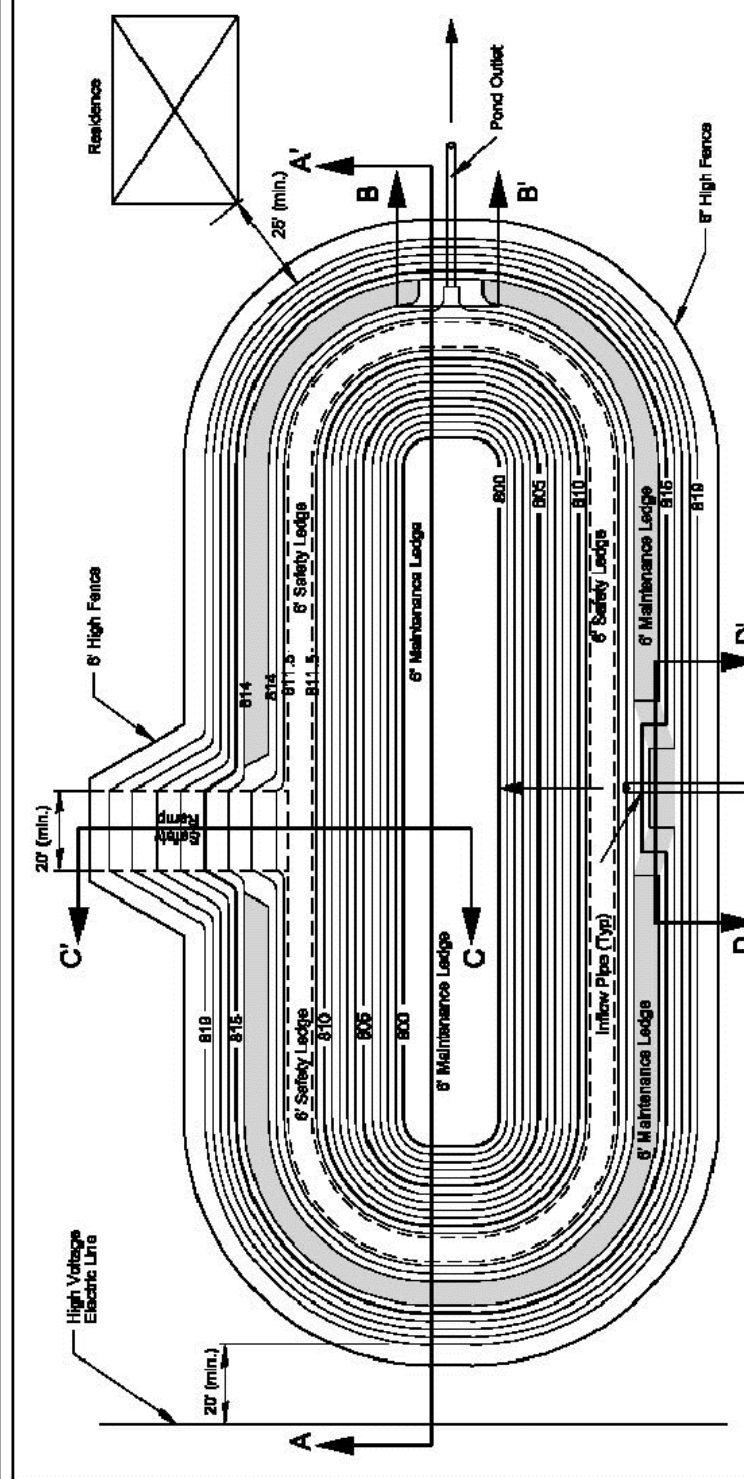
**CITY of MONTICELLO, INDIANA
STANDARD DETAILS
STORM SEWER**

FIGURE

ST-6

REVISION DATE

DATE: AUGUST 2019



WET-BOTTOM DETENTION FACILITY - WITH FENCE

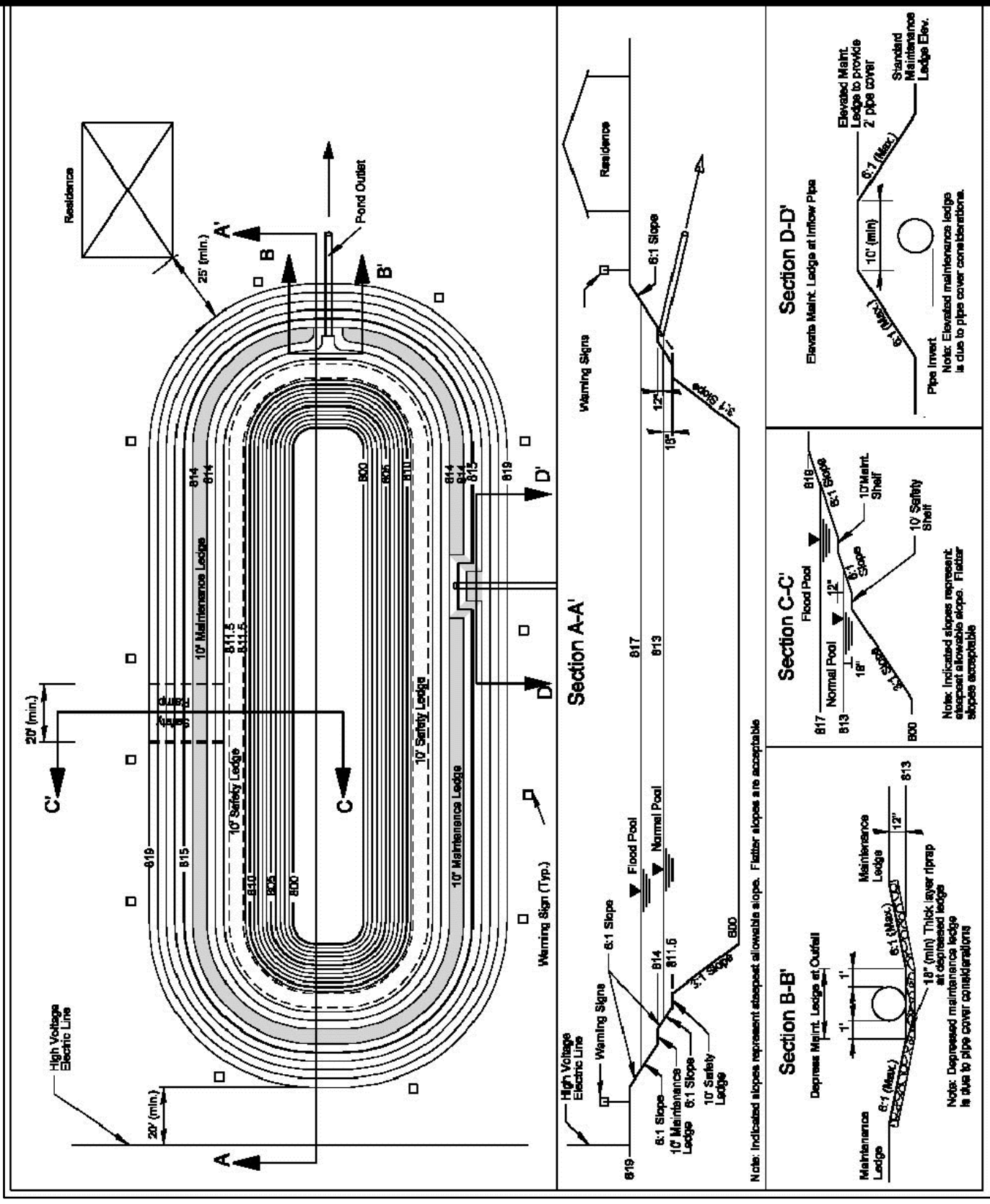
CITY of MONTICELLO, INDIANA
STANDARD DETAILS
STORM SEWER

FIGURE

ST-7

REVISION DATE

DATE: AUGUST 2019



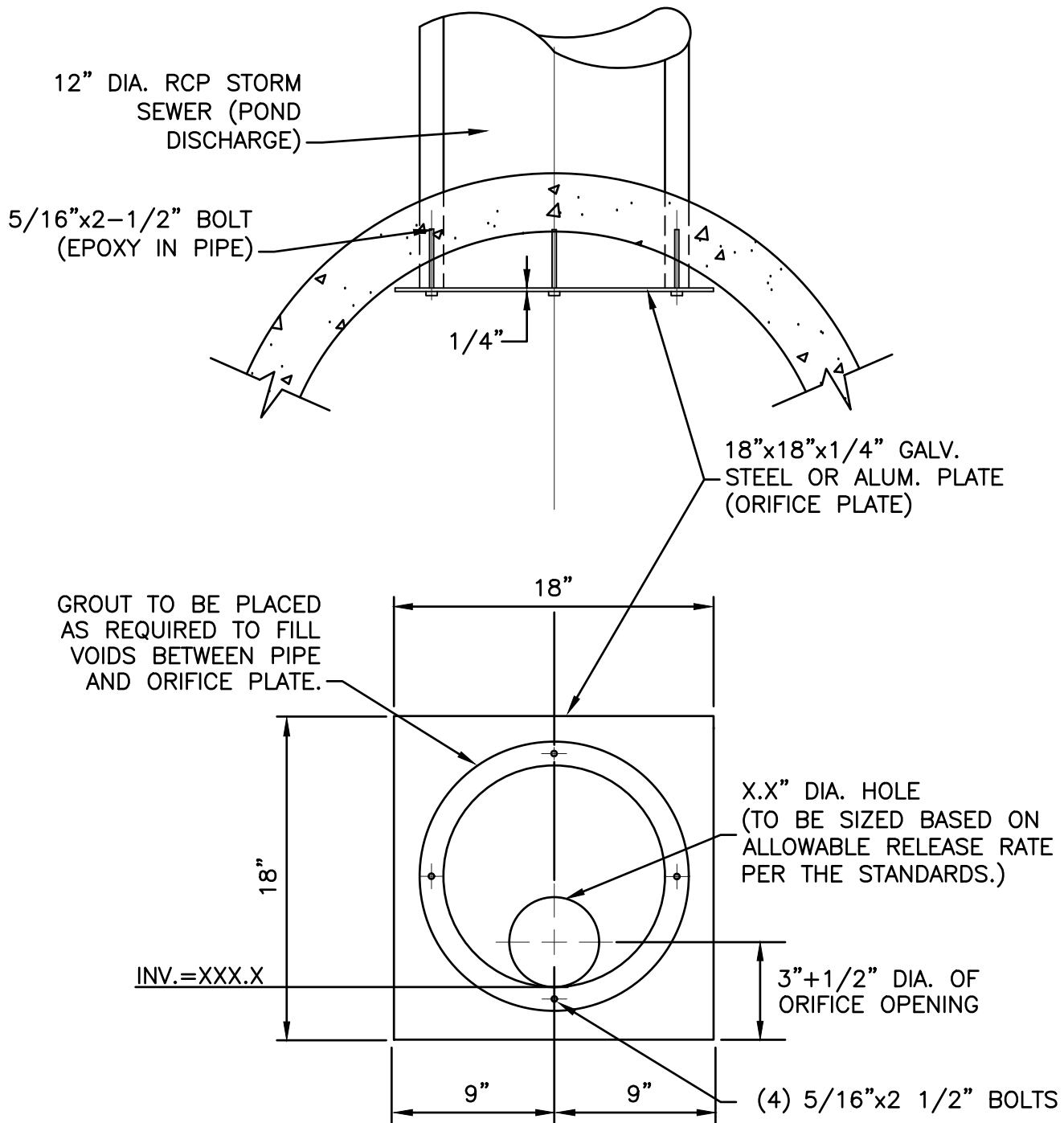
WET-BOTTOM DETENTION FACILITY – WITHOUT FENCE

CITY of MONTICELLO, INDIANA
 STANDARD DETAILS
 STORM SEWER

REVISION DATE

DATE: AUGUST 2019

FIGURE
 ST-8



ORIFICE PLATE DETAIL

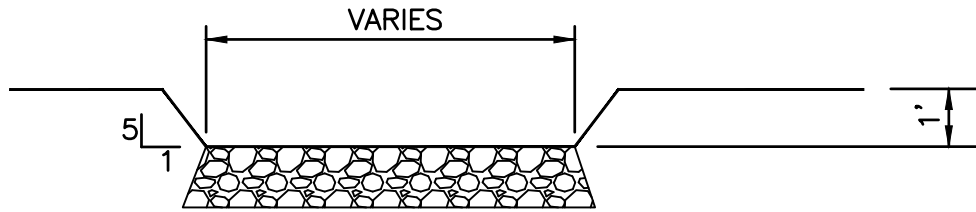
CITY of MONTICELLO, INDIANA
 STANDARD DETAILS
 STORM SEWER

FIGURE

ST-9

REVISION DATE

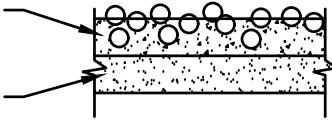
DATE: AUGUST 2019



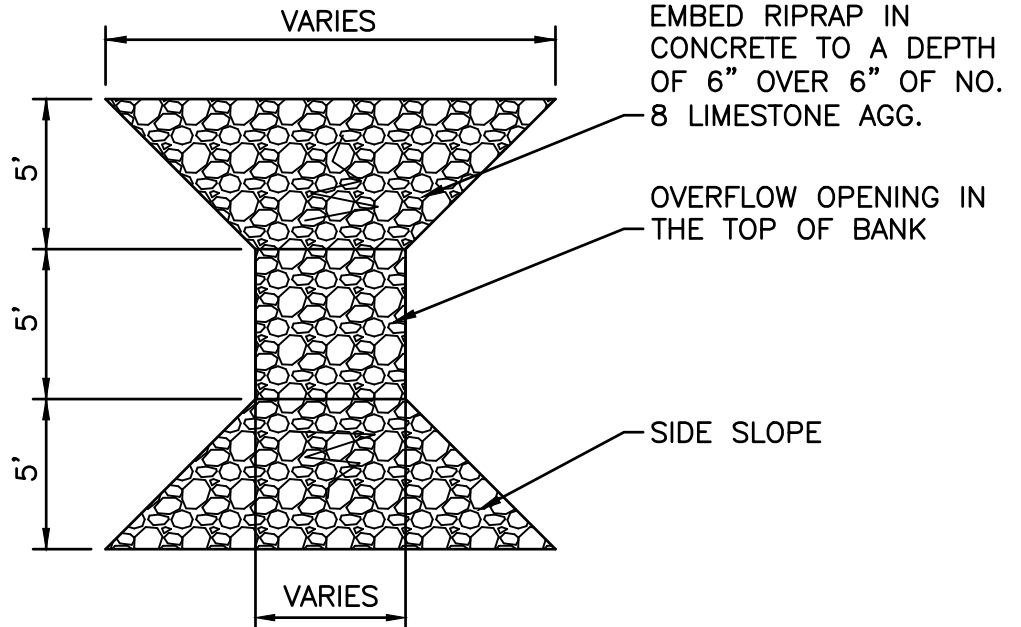
WEIR CROSS SECTION

EMBED RIPRAP (4"–8")
IN CONC. TO A DEPTH
OF 6"

6" OF NO.8
LIMESTONE AGGREGATE



EMBEDDED RIPRAP CROSS SECTION



OVERFLOW WIER DETAIL

REVISION DATE

**CITY of MONTICELLO, INDIANA
STANDARD DETAILS
STORM SEWER**

FIGURE

ST-10

DATE: AUGUST 2019